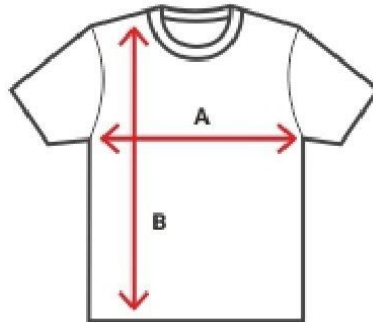


# KAEBALA

## SIZE AND FABRIC GUIDE

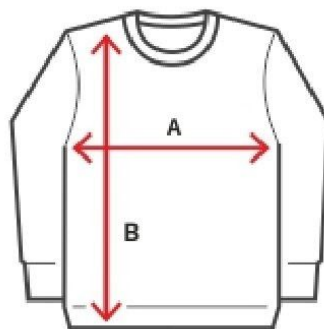


SIZE	S	M	L	XL	XXL	3XL
A (cm)	46	51	56	61	66	71
B (cm)	68,5	71	73,5	76	76,5	79



FABRIC COMPOSITION: 100% COTTON (3 % POLYESTER IN GRAY COLOR)

FABRIC WEIGHT: 195 grams/m<sup>2</sup>

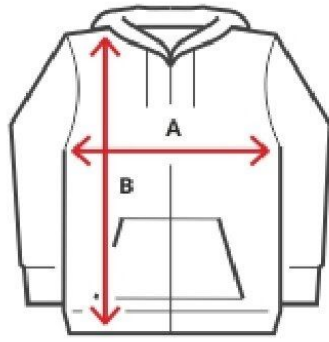


SIZE	S	M	L	XL	XXL
A (cm)	54	57	60	63	66
B (cm)	66	69	72	75	78



FABRIC COMPOSITION: 80% COTTON 20% POLYESTER

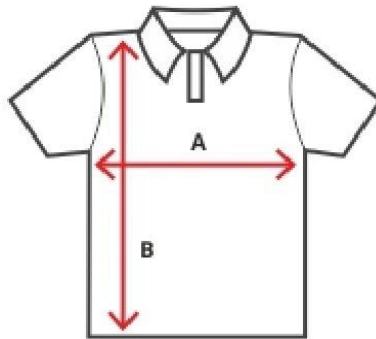
FABRIC WEIGHT: 320 grams/m<sup>2</sup>



SIZE	S	M	L	XL
A (cm)	53	57	60	63.5
B (cm)	66	67	69	71



FABRIC COMPOSITION: 80% COTTON 20% POLYESTER  
 FABRIC WEIGHT: 320 grams/m<sup>2</sup>



SIZE	S	M	L	XL	XXL	3XL
A (cm)	48	52	56	60	64	68
B (cm)	70	72	74	76	78	80



FABRIC COMPOSITION: 65% POLYESTER 35% COTTON  
 FABRIC WEIGHT: 230 grams/m<sup>2</sup>